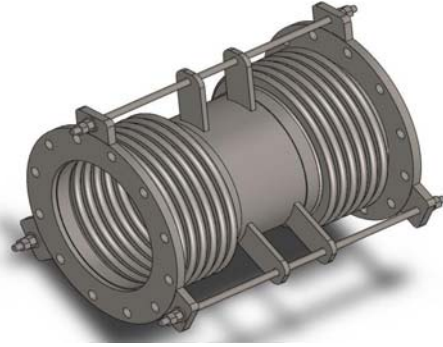


UNAFLEX UNIVERSAL TIED EXPANSION JOINTS



Fixed 150# Plate Flanges

Nominal Size (in.)	Lateral Movement (in.)	O.A.L. (in.)	Lateral Spring Rate (lbs./in.)	Added Movement per 1" of Additional Length (in.)	Number of Rods	For Nipple Ends Add to Flange Unit O.A.L.
2	1.5	14	22	0.188	2	4
	3.8	18	18			
	5.4	21	20			
2.5	1.4	14	28	0.157	2	4
	3.3	18	20			
	4.6	22	10			
3	1.3	14	32	0.152	2	4
	3.1	18	12			
	4.5	23	10			
4	1.0	14	44	0.151	2	4
	2.6	18	17			
	3.7	24	11			
5	2.0	19	50	0.182	2	4
	3.0	24	22			
	4.0	36	12			
6	1.5	21	100	0.152	2	6
	3.5	25	60			
	4.0	36	15			
8	1.5	20	120	0.138	2	6
	3.5	25	80			
	4.0	36	30			
10	1.3	20		0.128	2	6
	3.2	25				
	4.0	36				
12	1.6	25		0.110	2	8
	4.2	34				
	6.0	48				
14	3.0	30		0.102	4	8
	4.0	36				
	5.0	48				
16	3.0	30		0.100	4	8
	3.5	36				
	5.0	48				
18	2.5	30		0.098	4	8
	3.5	36				
	5.0	48				
20	2.0	30		0.092	4	10
	3.0	36				
	4.0	48				
24	2.0	36		0.079	4	10
	2.5	42				
	3.0	48				
30	2.0	42		0.073	4	10
	2.5	50				
	3.0	60				