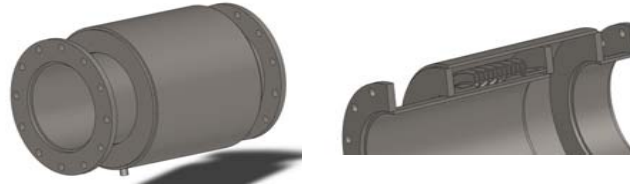


UNAFLEX EXTERNALLY PRESSURIZED EXPANSION JOINTS



TYPE EXS SINGLE

Nominal Size (in.)	Pressure (psig) at 600 deg F	O.A.L. (in.)	Axial Movements (in.)		Axial Spring Rates (lbs/in)	
			Compression	Extension	150 psig Style	300 psig Style
2	150 300	25	4	1	190	388
		34	6	2	130	260
		42	8	2	97	194
2.5	150 300	25	4	1	120	240
		34	6	2	80	160
		40	8	2	72	125
3	150 300	25	4	1	150	380
		34	6	2	90	230
		40	8	2	85	190
4	150 300	25	4	1	185	540
		34	6	2	116	340
		40	8	2	94	270
5	150 300	25	4	1	390	990
		34	6	2	270	670
		40	8	2	210	490
6	150 300	27	4	1	470	1,180
		35	6	2	315	800
		47	8	2	250	590
8	150 300	27	4	1	650	1,450
		35	6	2	410	850
		42	8	2	325	710
10	150 300	27	4	1	780	1,740
		35	6	2	490	1,015
		42	8	2	390	870
12	150 300	29	4	1	980	2,020
		37	6	2	610	1,213
		45	8	2	520	1,050
14	150 300	29	4	1	1,940	3,896
		37	6	2	1,220	2,370
		45	8	2	980	1,930
16	150 300	29	4	1	2,180	4,320
		37	6	2	1,370	2,630
		45	8	2	1,080	2,152